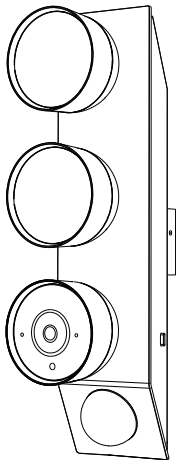


# Flight 3

ORIGINALITY DESIGN SMART - AND BEAUTIFUL



## QUICK GUIDE



# What's in the box

Consult the checklist below for all components.



Flight 3



Bracket



Screws x2



Bracket screws

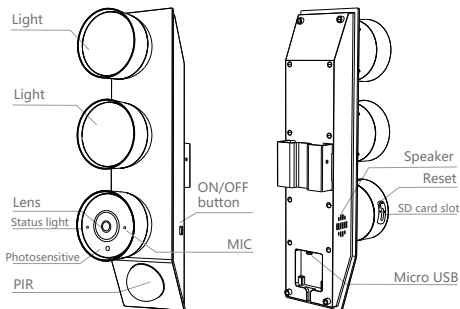


Screwdriver



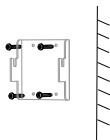
User Manual

# Description

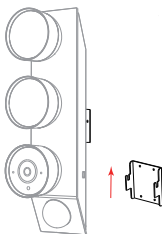


Power	DC 5V/2A of charging; 21700 batteries (4500mAh x 4pcs)
Status light	<ul style="list-style-type: none"><li>• Solid red light on: network is malfunctional</li><li>• Blinking red light: wait for network connection (slowly blinking) connecting the network (fast blinking)</li><li>• Solid blue light on: camera is working correctly</li></ul>
Microphone	Capture sounds for your video
SD card slot	Support local SD Card storage (Max.128G)
Reset	Press and hold the 'RESET' for 5 seconds to reset the device (If you have modified settings, they returns to factory defaults)
Light	You can turn the on/off the light, and adjust the brightness by the App.
PIR	There are two PIRs that are responsible for different areas. You can turn off the PIR by App according to needs, such as one PIR towards to busy traffic area. And you can select PIR sensitivity.

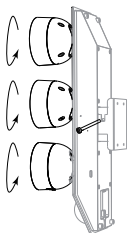
## Bracket Installation



①



②



③

1. Fix the bracket on the wall.
2. Install the bracket upward.
3. Lock the bracket and the camera by bracket screws.

(Optional) Adjust the camera angles manually. The angle of lights and lens can all be adjusted.

## Download

CloudEdge is available for both iOS and Android OS. Search the name 'CloudEdge' in App Store or Google Play, or scan the QR-Code to download the App.

## Support



## Add device

Log in the CloudEdge, select "Add Device", and add the smart camera to the App according to the screen tips(Make the smart camera close to the router when configuring).



**NOTE:** If you need to re-select the WiFi network, please press and hold the "RESET" button for 5 seconds, the device will restart, and the indicator will be flashing red.

# Function

## Light controlling

You can turn on or turn off the light by App.

## Two-way audio

You can see and hear the visitor in your App from the camera.

## PIR

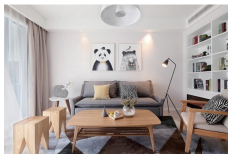
When someone passes by, an alarm will be triggered and sent to your phone.

## Record

Using SD card or Opening the Cloud-Storage Service, to keep recording for every moment.

## Auto light for night preview

Light will be turned on automatically when you use App to preview at night to offer you a colorful view.



Daytime



Night

Q: The device cannot be previewed properly?

A: Check whether the network is normal, you can place the camera close to the router, and if not, it is recommended to reset the device and add it again.

Q: Why is it still in the list of devices after resetting?

A: The reset device only resets the network configuration of the camera, but cannot change the configuration on the App, remove the camera, and must be deleted by the App.

Q: How to cut the camera network to another router?

A: First remove and reset the device on the App and then configure the device again by the App.

Q: Why doesn't the device identify the SD card?

A: It is recommended to plug in SD card after power cut. Confirm whether the SD card is normally available and the format is FAT32. And the TF card can't be identified when the Internet environment is not good.

Q: Why I can't get the notifications with my cell phone App?

A: Please confirm that the App has been running on the phone, and the relevant reminder function has been opened; Message notification and authority confirmation in the mobile phone system have been opened.